



*Changing The World of Storage*

# T120

*Data Protection  
Platform*



# The Spectra® T120 Data Protection Platform

A secure foundation for secondary storage

## Management

The T120 is easy to use and manage with its graphical BlueScale 10 interface — available on the library color touch-screen front panel, and from anywhere using a Web browser. This interface is shared across the T950, T120, and T50 libraries.

The optional Observatory suite of management tools includes SSL, SNMP, and SMTP/e-mail. The suite lets you centralize management of multiple Spectra libraries using a Web browser, making it easy to manage from 10 to 10,000 tapes across your organization, regardless of location. Even media management is streamlined through the use of TeraPack magazines that group and protect multiple tapes.

The T120 provides additional tools, such as the Health Odometer, which let you track library component usage and set notification limits. The library intelligently tells you when to change a filter or get a new cleaning cartridge. T120 AutoSupport notes possible problems, and automatically creates and sends an email notifying you and optionally Spectra Logic support of the issue, minimizing the need to manage support issues.

Managing the data center includes managing costs, and the T120 supports lower costs through a unique advantage: lowest power use. The T120 uses an average of 60%\* less energy than competing libraries. With energy costs and environmental concerns climbing, the T120 helps--by lowering costs—and reducing its environmental impact.

\*Range between 48-73% energy savings

## Growth

Adding slots to your T120 is simple, through Capacity on Demand (CoD). Adding drives and performance is easy, with slide-in drives and I/O blades (QIPs). This scalability protects your investment and ensures that your data is protected with the latest in technological advances. The T120 provides investment protection, so that you can seamlessly expand to a larger library—which will have the same interface, but more capacity, power, and features.

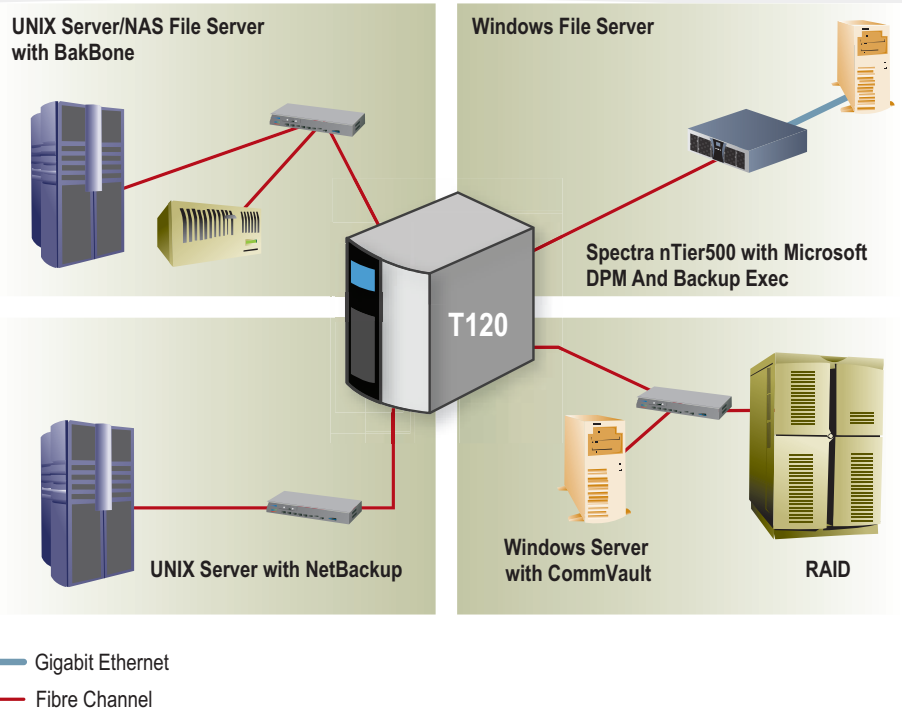


## Interoperability

With support for multiple connectivity protocols as well as all major backup software packages and operating systems, the T120 platform fits easily into any environment. The T120 platform can be quickly configured to use partitions, with integrated Shared Library Services so that the T120 simultaneously supports native SCSI and Fibre Channel drives, and plug-in Fibre Channel and iSCSI I/O blades (QIPs).

**Spectra Logic offered the industry's best, most customizable partitioning ability, along with reliability, expandability and attached Fibre Channel drives for optimal speed.**

Bill Slaughter, Tupperware



Using multiple partitions through integrated Shared Library Services, one library can simultaneously connect to multiple operating systems and backup software packages.



### SpectraGuard® support: committed to solving the problem

SpectraGuard technical support offers a menu of options to choose from, so you can get the support that's right for your data center. Options include worldwide, on-site support, next business day onsite, same business day onsite, and four-hour onsite response. In addition, you may choose advanced options such as an industry first Assisted Self Maintenance (ASM) option. This option stores a cache of user replaceable parts on-site, which are easy and quick to install, eliminating the delay that a site visit can involve. With the Spectra T120 library, you can count on SpectraGuard support with its on-time guarantee.



### Security

With the Spectra T120 library, seamlessly add AES-256 bit encryption in four easy steps. Encryption can be performed either through LTO-4 drives or through the library, letting you easily encrypt and backup data on any media type in a single step. The T120 also has complete encryption key management built into its BlueScale management interface, making secure data backup practical, affordable, and easy-to-implement.

The T120 also optionally supports Secure Sockets Layer (SSL) Internet connectivity, and limits library and encryption key access only to authorized users.



Step 1: Create an encryption user

Step 2: Create an encryption key

Step 3: Export the key for safe keeping

Step 4: Create a partition for encryption



### Reduce staff involvement with Spectra TeraPack® technology

Handling and managing the hundreds of tapes storing your site's data is a chronic data center problem. The Spectra T120 brings an elegant, straightforward solution: TeraPack cases, each holding multiple tapes. Using TeraPack cases automatically reduces time handling media. For example, users can load 80 LTO tapes (ten TeraPack cases) in under three minutes, compared to the hour it takes to load 80 tapes into competing libraries. Use the barcodes on the TeraPack magazines to track data even outside the library through Rotation Manager.

*TeraPack cases reduce overhead in managing media.*

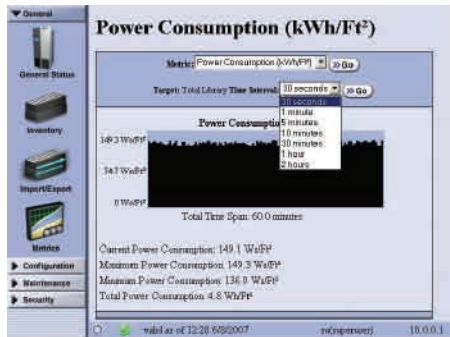
### Multiple media

A single T120 platform simultaneously supplies multiple tiers of storage to meet Information Lifecycle Management (ILM) strategies. Using multiple partitions through Shared Library Services (SLS), one library can support both LTO and SAIT media. By adding an external rackmounted RXT350 or nTier500 along side the T120, the platform easily supports Disk to Disk (D2D) and Disk to Disk to Tape (D2D2T) strategies for effective, efficient data migration through ILM.

By choosing Spectra Certified Media you get more out of your media investment. Tapes arrive already bar-coded and loaded into a TeraPack magazine, ready to use. The tapes' lifetime guarantee takes some of the worry out of managing the data center. Further, Certified Media tracks real-time data about tapes, and helps ensure rapid data recovery—important for litigation, regulation, and disaster.

### Go Green!

Spectra libraries simply use less power. Our products are designed right, with power efficiency built-in. Keep an eye on the power use by taking advantage of the library's power monitoring feature. Armed with this information, you can effectively manage your data center's power usage to suit your needs—and that's good for business and the environment.



nTier 500



RXT350 Virtual Tape Library

RXT350 or nTier500 and the T120 provide D2D2T, supporting ILM strategies.

### End-to-End Buyer Protection



### Seamlessly upgrade to larger libraries



Investment protection with trade-in towards larger T-series library  
 Easy-to-use with same interface, core features and backup strategies

## T120: Supporting secure, expandable secondary storage

The affordable Spectra T120 library saves time, lowers cost, and reduces risk. Time, perhaps the most limited IT resource, is freed up because the T120 reduces up to 80% of the hours previously spent on library-related backup tasks. The library's low energy use and scalability contribute to reducing costs by 20-40% over the life of the library. Using the T120's BlueScale® Encryption, you can reduce the risk of exposure through lost backup tapes by 100%. All this is complemented by the T120 library's extraordinary flexibility—start with the features you need now, and add features and capacity as your data grows and backup requirements change.

## T120 supports management simplicity, growth, interoperability, security and multiple media

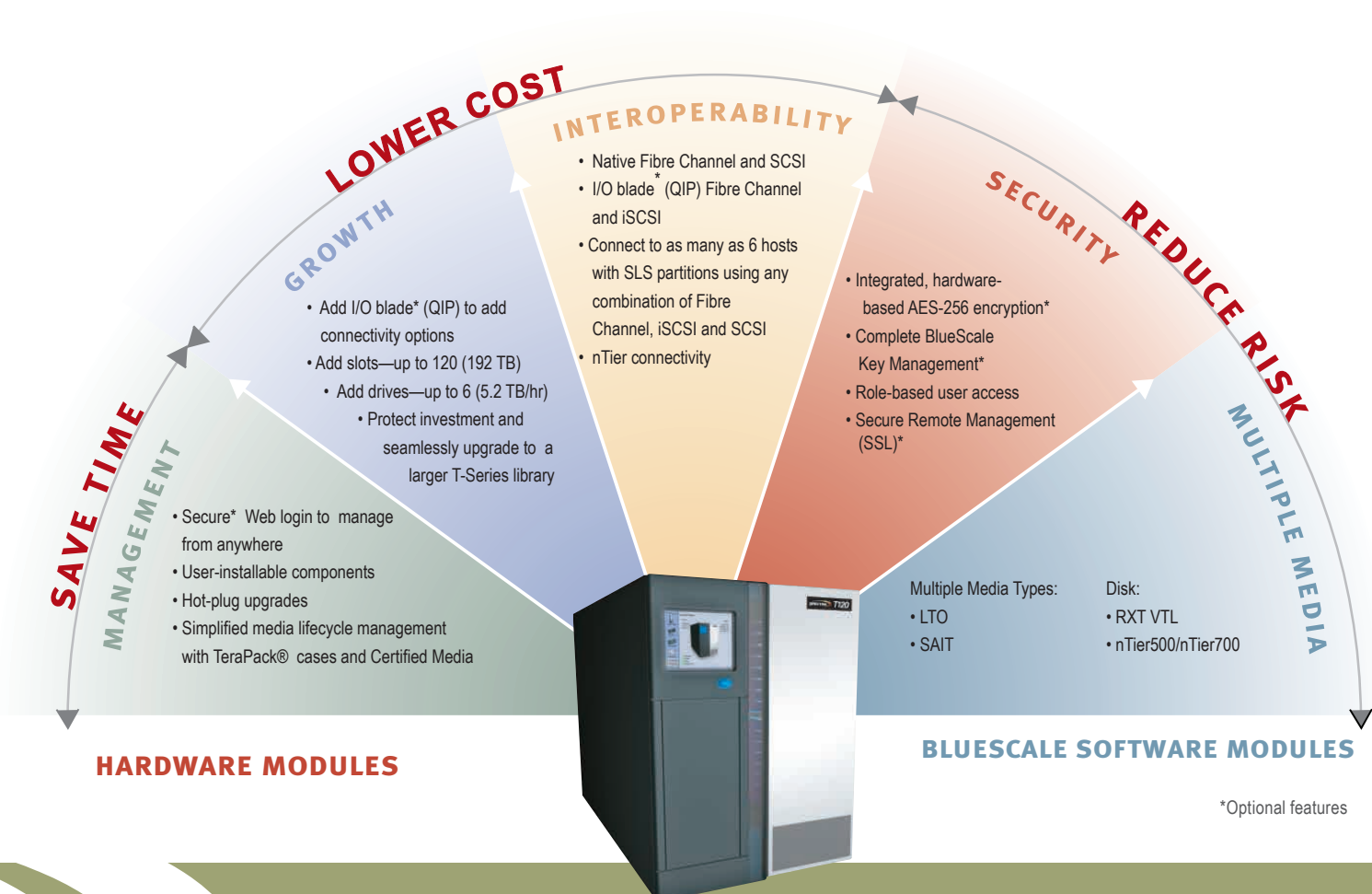
The T120 platform provides support for whatever is required next, because the T120 is built on two innovative core components:

- A modular physical architecture
- The BlueScale 10 software environment

These combine to permit continued feature development and rapid adoption and integration of new technologies.

**Tupperware now has the capacity and speed to meet its backup windows, and improved data integrity due to significantly reduced backup errors. The T950 and T120 are so reliable, we're confident we can recover tape data if a disaster hits.**

Bill Slaughter, Tupperware



Physical Characteristics	
Height: 14U	
H x W x D in: 24.5 x 17.5 x 36.5; H x W x D cm: 62 x 44 x 93	
Maximum storage cartridges: 120	
EE cartridges (minimum): 8	
Weight (loaded approximate): 305 lb/138 kg	
Power Consumption: 9.4 Amps @120 VAC Max config. 50/60 Hz	

Reliability Stats	
Mean Cycles Between Failures (MCBF)	Over 1 million
Mean Time Between Failures (MTBF)	250,000 power-on hours
Mean Time to Repair (MTTR)	3 minutes for hot swap components, 30 minutes average for non-hot swap components

Drives	LTO-4 throughput Native/compressed per hour	LTO-3 throughput Native/compressed per hour
2	864 GB/1.7 TB	576 GB/1.2 TB
3	1.3/2.6 TB	864 GB/1.7 TB
4	1.7/3.5 TB	1.2/2.3 TB
5	2.2/4.3 TB	1.4/2.8 TB
6	2.6/5.2 TB	1.7/3.5 TB

Supported By All Major Backup Applications			
BakBone	Xendata	Legato	Microsoft
CommVault	EMC	Masstech	Syncsort
Computer Associates	IBM TSM	Front Porch	Symantec

Tapes	LTO-4 capacity Native/compressed per hour	LTO-3 capacity Native/compressed per hour
30	24/48 TB	12/24 TB
45	36/72 TB	18/36 TB
60	48/96 TB	24/48 TB
90	72/144 TB	36/72 TB
120	96/192 TB	48/96 TB

Interfaces	
<b>I/O Blade (QIP) Connections</b> FC I/O Blade (QIP) <ul style="list-style-type: none"> <li>• 2 Gb/sec, dual port</li> <li>• 4 Gb/sec, dual port</li> </ul> iSCSI I/O Blade (QIP) <ul style="list-style-type: none"> <li>• 1 Gb/sec, dual port</li> <li>• 10 Gb/sec-ready</li> <li>• iSCSI TCP/IP Offload Engine (TOE)</li> </ul>	<b>Direct Connections</b> Native Fibre Channel (4Gb) Native LVD SCSI

SAIT also available. Contact your sales rep for details.

Sample Customer List			
Center For Disease Control	LSU Medical Center	Sask Energy	American Express
myspace	NCAR	Siemens Automotive	University of Chicago
Kennedy Space Center	Ricoh	The Golf Channel	US Army

\* Support planned for future LTO generations (LTO-5 and LTO-6 currently on roadmap).

## About Spectra Logic Corporation

Spectra Logic is the leading innovator in data archive and backup. We help customers all over the world protect data with power-efficient products that let users reduce risk, lower cost and save time. Spectra Logic's archive and backup products are designed specifically for secondary storage needs and are compatible with every major tape and disk format. Spectra products provide integrated encryption and key management options through the intuitive BlueScale 10 interface. The company's tape, disk and encryption solutions are designed to evolve over time and are an excellent investment for IT managers who project growth and plan for years into the future.

Since Spectra Logic was founded in 1979, the company has introduced innovative, industry-leading products including: Archive and Backup Servers (nTier-2007); hardware-based, VTL encryption with compression (RXT-2006); hardware-based, library-enabled encryption with compression (BlueScale Encryption-2005); and integrated tape and disk in a single library (Spectra T950 with RXT-2004). Spectra Logic is changing the world of storage.



Avax International, PO Box 542, Hillsburgh, ON N0B 1Z0 Canada  
 Phone - 647-367-1039 or 800-443-4542 Fax - 647-438-2242  
 email - sales@avax.com www.avax.com www.dataencryption.ca



Spectra Logic® and the Spectra Logic logo are registered trademarks of Spectra Logic Corporation. All rights reserved worldwide. All other trademarks and registered trademarks are the property of their respective owners. Specifications are subject to change without notice. Please contact Spectra Logic for availability of specific configurations and technologies.