

## **NASTAPE MAKES IT EASY TO:**

**SHARE BACKUP  
DEVICES OVER THE LAN**

**SIMPLIFY HOST  
CONNECTION**

**ACHIEVE HIGH  
PERFORMANCE**

**MANAGE TAPE  
DRIVES REMOTELY**



# THE NASTAPE MAKES BACKUP EASY

## NASTape

Spectra Logic is first to offer native iSCSI tape backup to the market through a simplified, affordable iSCSI tape drive - NASTape.

NASTape offers exceptional performance in workgroup, Web, e-commerce, pre-press and desktop publishing, video and GIS environments. The stand-alone, networked tape drive uses inexpensive Gigabit Ethernet to connect to the host and can integrate AIT, LTO, SDLT and SAIT tape technologies.

Backed by Spectra Logic's 3-year, advanced replacement service, QuickSwap, NASTape delivers the best value in its class.

### Share Backup Devices Over The LAN

Instead of dedicating a tape drive to each server, NASTape allows you to share the backup device between servers over the LAN, resulting in dramatic cost savings for backup and restore operations.

### Simplify Host Connection

SCSI technology is limited in cable length and requires complicated host adapters and terminators. NASTape runs on an Ethernet network and can be plugged and unplugged while the system is live. These features allow you to access NASTape over distances and be located separately from the server.

### Achieve High Performance

As demand for storage grows, fast transfer rates have become a necessity in managing backups. NASTape can stream an SAIT or LTO-2 tape drive over a Gigabit Ethernet connection.

### Manage Tape Drives Remotely

NASTape comes with an embedded Web server, which enables you to configure and monitor NASTape with a standard Web browser.

**Spectra Logic** is a leading manufacturer of tape libraries for mission-critical data protection, backup and archival for companies worldwide. The company was the first in the industry to automate Sony AIT (Advanced Intelligent Tape) tape technology and the first to offer native Fibre Channel and Gigabit Ethernet connectivity in a library. Currently, Spectra Logic has more than 12,000 libraries installed.



### Protect Your Investment

NASTape is "library-ready", meaning you can trade up to a tape library as your storage capacity needs grow and re-apply your NASTape drive in any Spectra Logic tape library.

### Software Compatibility

NASTape is compatible with all major backup and archive applications available today, including popular packages offered by VERITAS, Computer Associates, Legato, Syncsort, Bakbone, Novastor, Dantz, Microsoft backup and Unix native utilities such as tar, dump, restore and cpio. Visit [www.SpectraLogic.com/support](http://www.SpectraLogic.com/support) for support matrix.

### DASTape

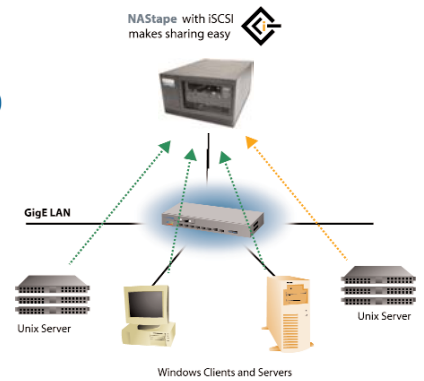
If you are looking for an affordable SCSI tape drive, DASTape is for you. DASTape is suitable for the single server environment. Like NASTape, DASTape is "library-ready", backed by the Spectra Logic QuickSwap service and easily upgradeable to an iSCSI NASTape.

#### NASTape Specifications

NASTape 100: 7.4" W x 11.5" L x 3.5" H  
 NASTape 200: 9.8" W x 13.5" L x 5.9" H  
 Input power: 100VAC to 240VAC  
 Power consumption:  
 NASTape 100 less than 70 Watts  
 NASTape 200 less than 103 Watts (with LTO)  
 Serial interface: DB-9 (female)  
 Ethernet port: RJ-45, 100/1000 Base-T  
 Certification: UL, ULc, FCC class A, CE

#### DASTape Specifications

DASTape 100: 7.4" W x 11.5" L x 3.5" H  
 DASTape 200: 9.8" W x 13.5" L x 5.9" H  
 Input power: 100VAC to 240VAC  
 Power consumption:  
 DASTape 100 less than 38 Watts  
 DASTape 200 less than 70 Watts (with LTO)  
 Interface: 68 pin SCSI (LVD/SE) with terminator  
 Certification: UL, ULc, FCC class A, CE



### Trade-in Migration path



### Configuration Options

	Native Capacity	Native Performance	Compressed Capacity	Compressed Performance
NASTape 100 or DASTape 100 with AIT-2 Drive	50 GB	6.0 MB/sec	130 GB	15.6 MB/sec
NASTape 100 or DASTape 100 with AIT-3 Drive	100 GB	12.0 MB/sec	260 GB	31.2 MB/sec
NASTape 200 or DASTape 200 with SAIT Drive	500 GB	30.0 MB/sec	1.3 TB	78.0 MB/sec
NASTape 200 or DASTape 200 with LTO1 Drive	100 GB	15.0 MB/sec	200 GB	30.0 MB/sec
NASTape 200 or DASTape 200 with LTO2 Drive	200 GB	35.0 MG/sec	400 GB	70.0 MB/sec
NASTape 200 or DASTape 200 with SDLT 320 Drive	160 GB	16.0 MG/sec	320 GB	32.0 MB/sec

Note: User can purchase NDMP license for NASTape to backup NAS devices. See NDMP datasheet for details.

Avax International, 8 Thompson Crescent, Erin, Ontario NOB 1T0 Canada  
 Phone 519-833-2900 or 800-443-4542 Fax 519-833-7469  
 email - [sales@avax.com](mailto:sales@avax.com) Web - [www.avax.com](http://www.avax.com) or [www.avax.ca](http://www.avax.ca)

Spectra Logic and the Spectra Logic logo are registered trademarks of Spectra Logic Corporation. All rights reserved worldwide. All other trademarks and registered trademarks are the property of their respective owners. Specifications are subject to change without notice. Please contact Spectra Logic for availability of specific configurations and technologies.